



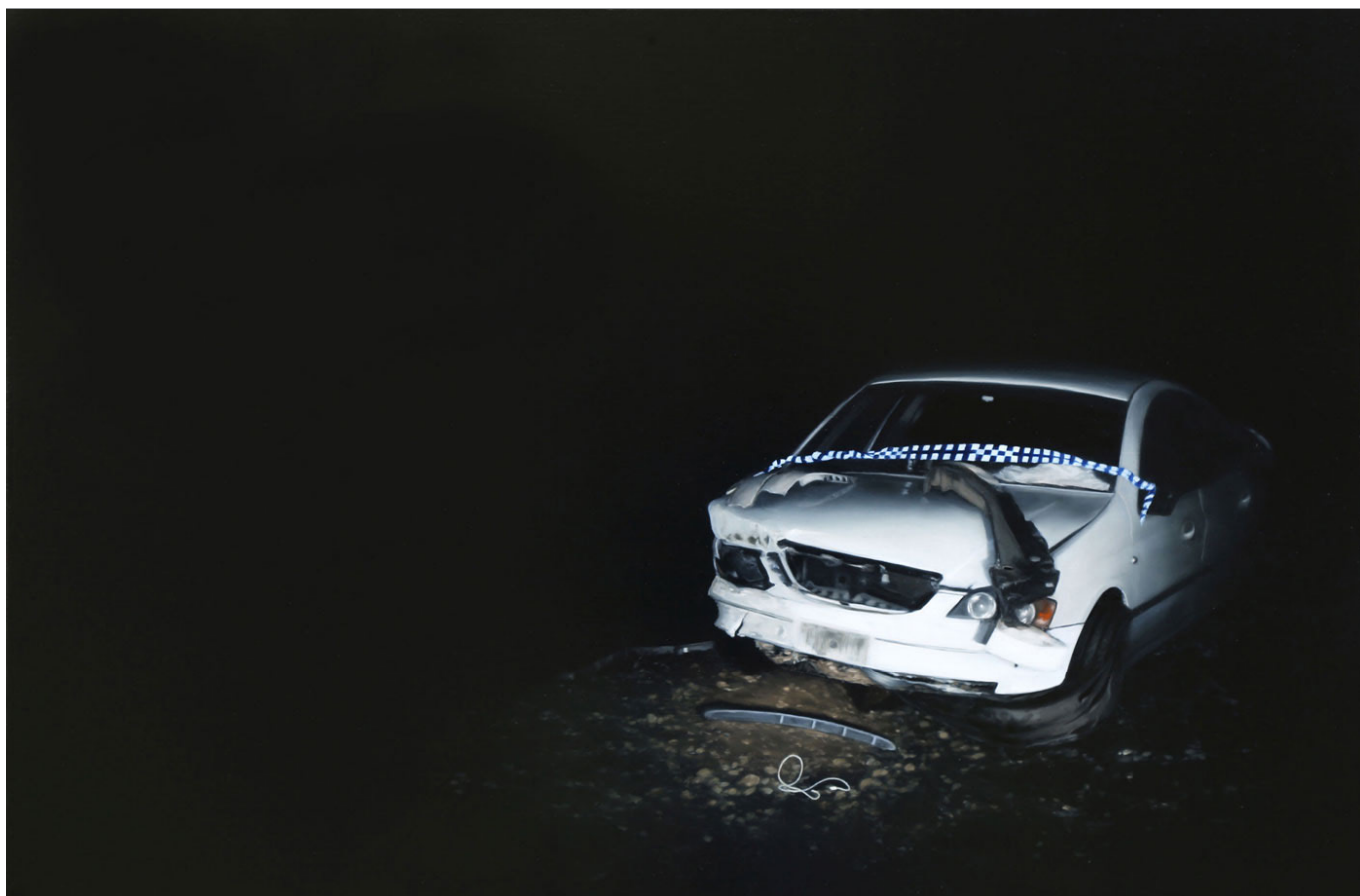
'Supercrop'
2016
oil on linen
61 x 92 cm
\$3,200

Exhibition History:
'Remnants', MARS Gallery, 29 September - 15 October 2016
'Telaesthesia', Hill Smith Gallery, 23 September - 14 October 2017

CAMILLA TADICH

AVAILABLE WORKS

Camilla Tadich is a Melbourne based painter and sculptor who graduated Victorian College of the Arts in 2006. Tadich has held residencies in South Australia, Victoria and in France, and has been a finalist in numerous prizes, most recently the Nillumbik Prize 2017, Montsalvat, Bayside Acquisitive Art Prize, Bayside Arts Centre and Ian Potter Cultural Trust Grant.



'Full Tilt'
2017
oil on linen
61 x 92 cm
\$3,200

Exhibition History:
'Telaesthesia', Hill Smith Gallery, 23 September - 14 October 2017



'Wild Dog Creek'
2017
oil on linen
40 x 55 cm
\$2,500

Exhibition History:
'Telaesthesia', Hill Smith Gallery, 23 September - 14 October 2017



'Picnic'
2016
oil on linen
35 x 48 cm
\$1,800

Exhibition History:
'Remnants', MARS Gallery, 29 September - 15 October 2016
'The Ordinary Instant', The Gallery @ BACC, 2016
'Telaesthesia', Hill Smith Gallery, 23 September - 14 October 2017



'1.25am Muirs Road'

2016

oil on linen

35 x 48 cm

\$1,800

Exhibition History:

'Remnants', MARS Gallery, 29 September - 15 October 2016

'The Ordinary Instant', The Gallery @ BACC, 2016



'3.10am Jacksons Road'
2015
oil on linen
35 x 48 cm
\$1,800



'Noctambule #1'
2015
oil on paper
48 x 43 cm
\$880

CV

EDUCATION

2003- 2006 Bachelor of Fine Art (Painting) Victorian College of the Arts, Melbourne
2001-2002 Diploma of Arts (Visual Arts) Northern Metropolitan Institute of TAFE, Melbourne

SOLO EXHIBITIONS

2015 Noctambule, Alliance Francaise de Melbourne, St.Kilda
2015 Noctambule, Centre Intermondes, La Rochelle, France
2012 New paintings, Peter Walker Fine Art, Walkerville, Adelaide
2012 In the Shadows, Dianne Tanzer & Projects gallery
2010 Slabalong, Sophie Gannon Gallery, Melbourne
2007 New paintings, Flinders Lane Gallery, Melbourne
2006 Silent Space, Alliance Francaise de Melbourne, St.Kilda

GROUP EXHIBITIONS

2016 The Ordinary Instant, Bayside Arts Centre, Brighton
2016 Bayside Acquisitive Art Prize, Bayside Arts Centre, Brighton
2016 Nillumbik Art Prize, Montsalvat, Eltham
2014 Nillumbik Art Prize, Montsalvat, Eltham
2013 Fleurieu Landscape Prize, McLaren Vale, South Australia
2013 Westspace Annual Fundraiser, Westspace, Melbourne
2012 John Leslie Landscape Prize, Gippsland Regional Art Gallery, Sale
2012 Westspace Annual Fundraiser, Westspace, Melbourne
2012 Nillumbik Prize, Montsalvat, Eltham.
2012 Put out the sun, C3 gallery, Abbotsford convent, Melbourne
2011 New Romantics, Gippsland Regional Art Gallery, Sale
2011 Fleurieu Landscape Prize, Mc Laren Vale, South Australia
2011 Westspace Annual Fundraiser, Westspace, Melbourne
2011 Waterhouse Natural History Prize, South Australian Museum, Adelaide
2011 Painting 11, Lindberg Contemporary gallery, Melbourne
2011 Nillumbik Art Prize 2011, Montsalvat, Eltham
2011 New Romantics, MARS gallery, Port Melbourne
2011 Symbols of loss and recovery, Montsalvat, Eltham

GRANTS, AWARDS & RESIDENCIES

2016 Bayside Acquisitive Art Prize finalist, Bayside Arts Centre, Brighton
2016 Nillumbik Art Prize finalist, Montsalvat, Eltham
2015 Centre Intermondes residency, La Rochelle, France
2015 Ian Potter Cultural Trust Grant
2014 Nillumbik Prize Finalist, Montsalvat, Melbourne
2013 Fleurieu Landscape prize finalist, McLarenVale, South Australia
2012 Nillumbik Prize 2012- Highly Commended
2012 John Leslie Landscape Prize, Gippsland Art gallery, Sale
2011 Fleurieu Landscape prize finalist, McLarenVale, South Australia
2011 Waterhouse Natural History prize finalist, winner of third Prize in the Painting section,
2011 South Australian Museum, Adelaide
2011 Nillumbik shire Art prize 2011 Finalist
2010 Nillumbik shire Art prize Finalist
2005 MARS(Melbourne Art Rooms) Award

COLLECTIONS

Centre Intermondes, France
Artbank
Bundanon Trust
City of Whitehorse
Nillumbik Shire Council

SELECTED BIOGRAPHY

Art Nation, ABC TV, episode August 1st 2010
Dan Rule, 'Around the galleries', The Saturday Age A2 liftout, 17 July, 2010
Christopher Allen, 'Into the Inferno',The Weekend Australian Review, p11-12, 26-27June 2010
Trent Walter, 'Bushfire Australia-Tarrawarra Museum of Art', Art Monthly Australia, June issue #230, p.18-20, 2010
Gabiella Coslovich, 'Brush with fire turns into brushstrokes of art', The Age, p.3, 27 March 2010
Art Nation, ABC TV, episode 23 May 2010
Amanda Smith, Artworks program, Radio National, April 2010
Dan Rule, 'Around the galleries', The Age, March 2010
Tony Lloyd, 'Opinion: Camila Tadich- SLABALONG', Artinfo.com.au, March 2010

[MARS]

7 James Street, Windsor, Victoria Australia 3181
T: +61 3 9521 7517 E: andy@marsgallery.com.au

www.marsgallery.com.au