



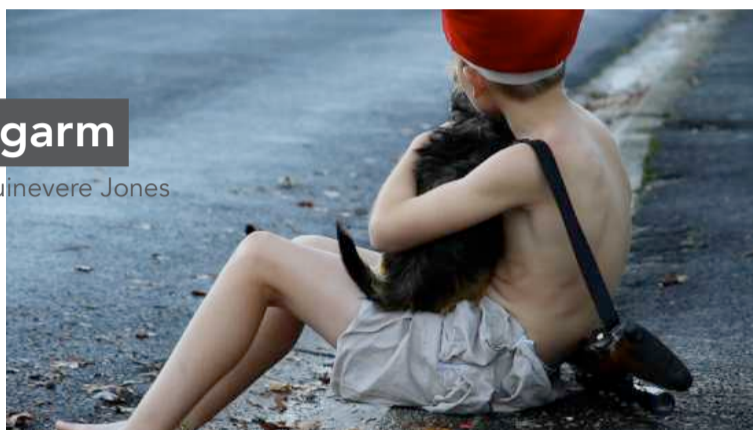
third year rmit bachelor of design (fashion)
screening fashion studio
film screening



Replica Replica

By: Louise Kayler-Thomson

Dark shadows and spotlights emphasise the replication of eerie paper dolls as they come to life exploring the destruction and intriguing notion of tearing down paper garments.



Aegarm

By: Guinevere Jones

Contrastingly different people subconsciously propose how a garment is defined by questioning the reasons behind wearing garments through the familiar rituals of dressing. The reasons are confronted through the contextless nature of the items, testing the way they make us feel when wearing them in certain environments.



by the waterfall

By: Stephanie Walverens

'by a waterfall' explores the dressing and undressing of the body in nonconventional ways. Following the movements of a girl, in and out of an imaginary landscape, we watch as she bizarrely and fantastically interacts with wash away outfits, water-sprinkling lingerie and levitating dresses.

Sharp Reality?

By: Amanda Wong



The reality of creature and landscape distorted through reflection, refraction and perspective.

Transformation

By: Sarah Kayler-Thomson



Unable to sleep, insomnia – awake. An intimate portrayal of isolation and observation. Exploring the night like a nocturnal creature—she is a bat. The transformation through garments reveals an insight into her delicate mind as her imagination runs wild.

SKIN/SUMMER '14

By: Karima Sulaiman



SKIN/SUMMER '14 is a fleeting glance into an alternate reality that both challenges and subjectifies fashion.



Teaser

By: Winnie Huang

The epitome of the everyday and the mundane, an object that lives in our pantry, comes into interaction with the human body, exemplifying the essence of contemporary fashion art as it celebrates the potential 'teabag'.

Embodiment

By: Cluny McCullagh

THE EMBODIMENT OF CLOTHES

Put on a shirt; slide your arms into the sleeves and button it up; Or wrap it up and wear it as a scarf; wear it backwards around your waist, it's a skirt - it's whatever you want it to be. The Embodiment of Clothes explores the relationship between the wearer; the garment and notions of embodiment, physical, and psychological because in the end, what really makes a garment? Starring Lucy Pitt.



Yours

By: Tawnee Donaldson

A personal response to fashion and the relationship between body, garment and the mental state. This film is based on the influence of anxiety and insecurity on one's mindset and behaviour. It studies how the hyper-awareness of clothing can control and possess a wearer and their interaction with self, others and environment. collaborative project by Tawnee Donaldson with Jacob Williams of STANDARD: <http://www.wearestandard.com.au>



The Journey

By: Chris Baddely



Fashion is a reflection of an individual's journey and the way that they respond to the environment around them, for all things that are put on everyday (or not put on) there is an environmental reason for. The film is a literal interpretation of this statement and depicts a journey that influences one individual's garments.

CLOTHE

By: Alexandra Louise Champion Hackett



Observing various different synonyms of the word 'film', Clothe looks into how films can create fashion when placed on the body. It is a fashion film about fashion films.

BURGLAR

By: Yori Atira



The intoxication and thievery of a chair veil. The love for light, literature and warmth. The aversion of a white shirt. Burglar is a film symbolising a personal, ambiguous definition of garments, being a free act of dressing and fashion, being a creator's blank canvas.

RE-PRODUCTION

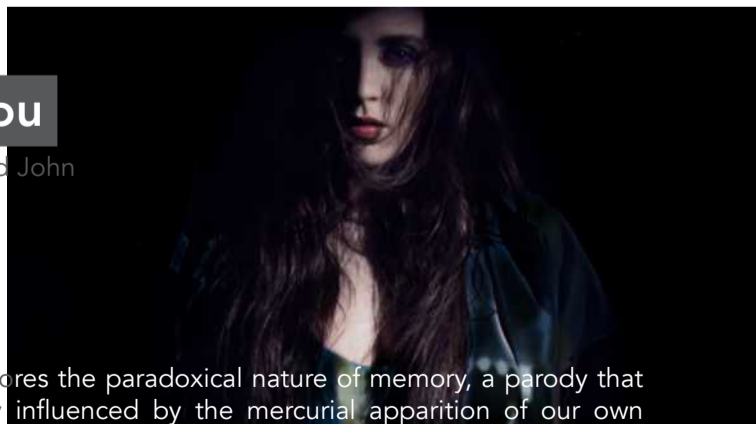
By: Alexandra Louise Champion Hackett



Proposing the concept of looking at the body as the garment, Re-Production looks into the idealistic construction of a perfect body for the fashion industry, through methods unique to the fashion production process.

Erase You

By: Daniel Good John



Erase You explores the paradoxical nature of memory, a parody that is continuously influenced by the mercurial apparition of our own perspectives, demonstrating how the enigmatic quality of our memory impacts on not only the way we store it but how this determines our ability to decipher our own reality. This exploration generates a push pull of psychological and physical states portrayed through images of joy and despair, screaming and muteness, ecstasy and emotional release, gravity and weightlessness, presence and absence. And it is this constant flux that undercuts the work with a dark, emotional and unnerving tension, putting into play the question of 'what is real'?

Lounge Suit

By: Kiri Malarski



Pam's life is like a box of chocolates, you never-no, wait. Wrong movie. Pam works in a call centre, and enjoys going to the pub. Little does she know, her life is about to become very colourful! Explore the ways in which fashion constricts our lives, and how we can overcome this daily struggle in this touching little film. "Malarski, will rival Spielberg one day.....five stars"- Margaret and David (At The Movies)